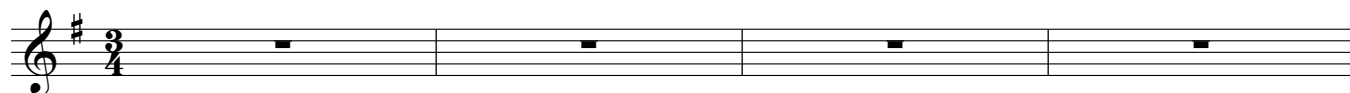


# Solstice Song *vocal score*

*p. 1 of 3*

words & music by Alouette Iselin  
arr. Peter Amidon



5 *solo*  
Let me come in and share your light for I'm with - out a

11  
friend to - night, Let me come in and share your light and a

17  
warm place by your fire.

21 *women*  
It looks so gol - den warm wi - thin, shel - tered from the win - ter wind,

29  
songs and laugh-ter, friends and kin have brought me to your door.

37 *All*  
Let me come in and share your light for I'm with - out a friend to - night,

45  
Let me come in and share your light and a warm place by your fire.

Solstice Song - vocal score - p. 2 of 3

53 *men*



Op - en your door for here I stand, my on - ly gift is my emp - ty hand, an

Detailed description: This block contains the first system of music, measures 53 to 60. It is written in bass clef with a key signature of one sharp (F#). The melody consists of quarter and half notes. The lyrics are: "Op - en your door for here I stand, my on - ly gift is my emp - ty hand, an".

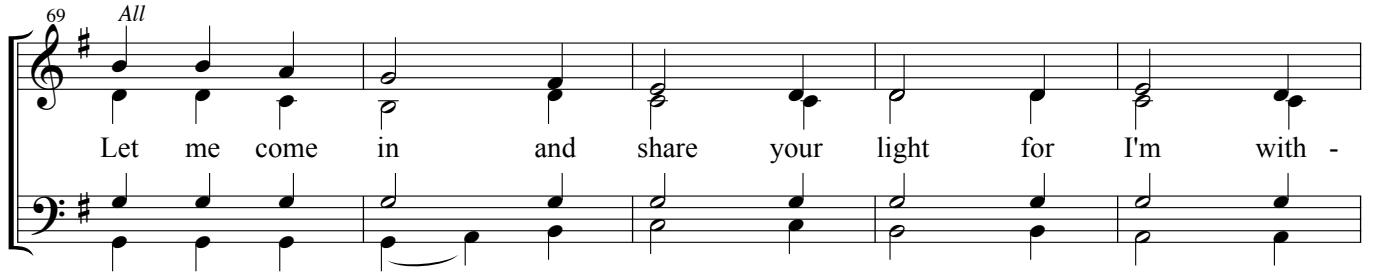
61



em - pty heart and bro - ken plans, this dark day of the year.

Detailed description: This block contains the second system of music, measures 61 to 68. It continues in bass clef with a key signature of one sharp. The melody features a long note with a fermata over the word "year". The lyrics are: "em - pty heart and bro - ken plans, this dark day of the year."

69 *All*



Let me come in and share your light for I'm with -

Detailed description: This block contains the third system of music, measures 69 to 73. It is written in treble clef with a key signature of one sharp. The melody is marked "All" and consists of quarter notes. The lyrics are: "Let me come in and share your light for I'm with -".

74



out a friend to - night, Let me come in and

Detailed description: This block contains the fourth system of music, measures 74 to 78. It continues in treble clef with a key signature of one sharp. The melody features a long note with a fermata over the word "night". The lyrics are: "out a friend to - night, Let me come in and".

79



share your light and a warm place by your fire.

Detailed description: This block contains the fifth system of music, measures 79 to 86. It continues in treble clef with a key signature of one sharp. The melody consists of quarter and eighth notes. The lyrics are: "share your light and a warm place by your fire."

Solstice Song - vocal score - p. 3 of 3

84 *All - slower, expressively, rubato*

I am with - out a home to - day, and soon I will be on my

Detailed description: This system contains measures 84 through 91. The music is in G major (one sharp) and 4/4 time. The tempo/mood is 'All - slower, expressively, rubato'. The vocal line starts with a whole rest in measure 84, then begins in measure 85. The lyrics are 'I am with - out a home to - day, and soon I will be on my'. The piano accompaniment consists of a steady eighth-note bass line.

92 *a tempo*

way, I on - ly ask you to let me stay, for an

Detailed description: This system contains measures 92 through 96. The tempo changes to 'a tempo'. The lyrics are 'way, I on - ly ask you to let me stay, for an'. The vocal line continues with a melodic line. The piano accompaniment continues with the eighth-note bass line.

97 *no breath*

ho - ur by your fire.

Detailed description: This system contains measures 97 through 100. The lyrics are 'ho - ur by your fire.'. The vocal line features a long note in measure 99 that is held over into measure 100, with a 'no breath' instruction. The piano accompaniment also has a long note in measure 99 held over into measure 100, also with a 'no breath' instruction.

101

Let me come in and share your light for I'm with - out a

Detailed description: This system contains measures 101 through 106. The lyrics are 'Let me come in and share your light for I'm with - out a'. The vocal line has a melodic line with some grace notes. The piano accompaniment features a more active bass line with eighth and sixteenth notes.

107 *rit.*

friend to - night, Let me come in and share your light and a

Detailed description: This system contains measures 107 through 112. The tempo is marked 'rit.' (ritardando). The lyrics are 'friend to - night, Let me come in and share your light and a'. The vocal line continues with a melodic line. The piano accompaniment has a steady bass line.

113

warm place by for an ho - ur by your fire.

Detailed description: This system contains measures 113 through 116. The lyrics are 'warm place by for an ho - ur by your fire.'. The vocal line concludes with a final note in measure 116. The piano accompaniment concludes with a final chord in measure 116.